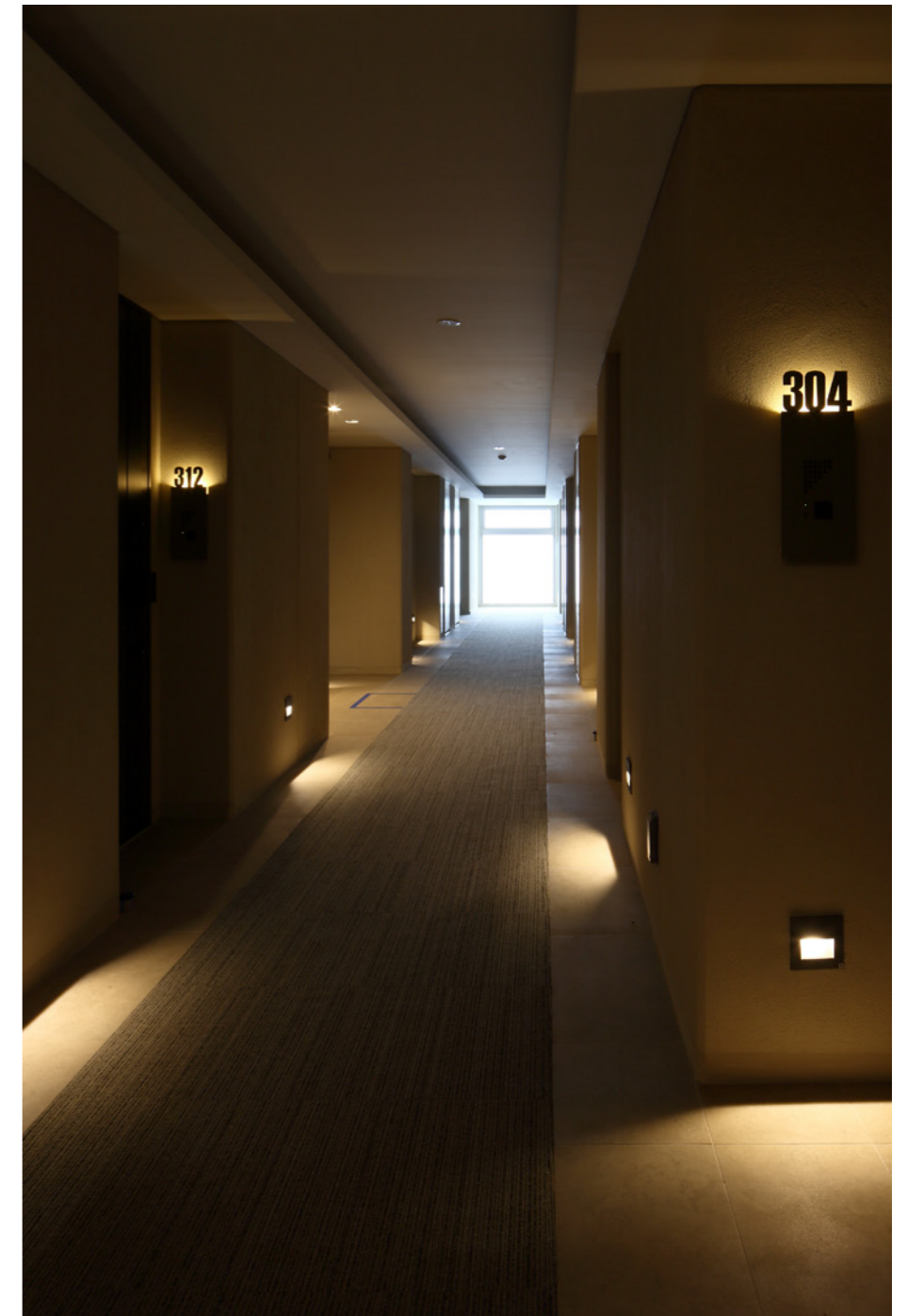
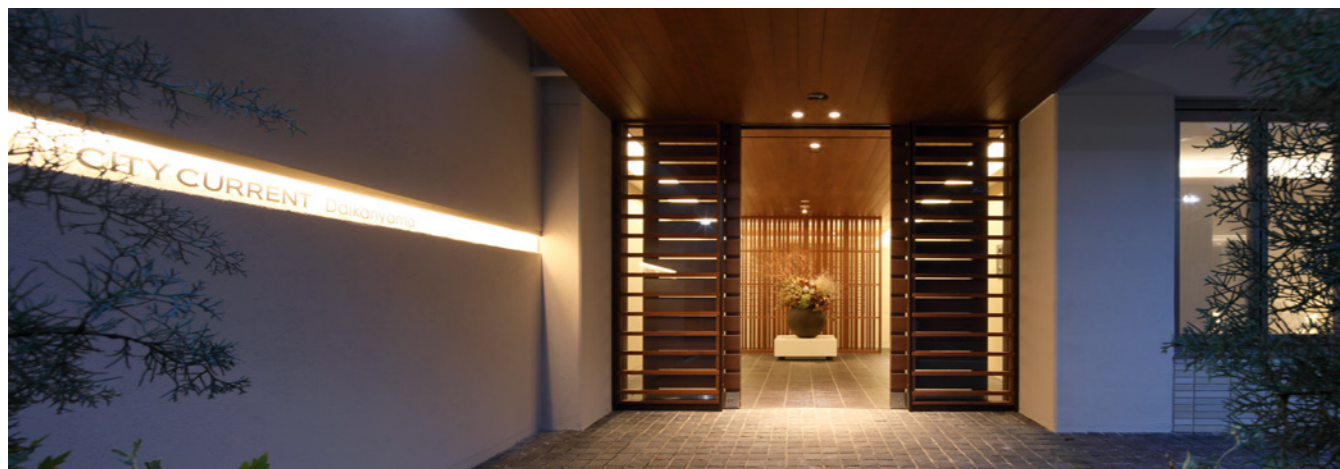




East facade with the entrance



Shared hallway where room numbers are lit by indirect lightings



Entrance space



Lounge that can also be used as coworking space

## CITY CURRENT Daikanyama

Year of Completion : 2016  
 Location : Ebisunishi 1-34-6, Shibuya,  
 Tokyo, Japan  
 Use : Apartment Building  
 Site Area : 1,299.73 m<sup>2</sup>  
 Building Area : 908.38 m<sup>2</sup>  
 Total Floor Area : 3,788.17 m<sup>2</sup>  
 Structure : Reinforced Concrete  
 Volume : 5 stories above ground level

In recent years, Daikanyama has been seeing with increasing various commercial facilities as a youth town. The site of this project is also located at a convenient location, where has a minute's walking distance from Daikanyama Station, with the bustle of the area is nearby. However, since it is located in a quiet residential area where is one step away from the main street, it is to notice that it should not be a design for young people but a calming design for office workers and entrepreneurs who work hard in the city center, making them feel relieved after returning home. In particular, the space from the entrance to dwelling unit is a space where people can change their mood through the vibes brought by materials such as wood and high-quality tiles.